



# North Worcestershire **Community Safety Partnership**

## Community Safety Partnership Review

March 2024 to December 2024

Bev Houghton  
Community Safety Manager  
[bev.houghton@bromsgroveandredditch.gov.uk](mailto:bev.houghton@bromsgroveandredditch.gov.uk)

# **NWCSP Responsible Authorities**

- **West Mercia Police**
- **Bromsgrove District Council**
- **Redditch Borough Council**
- **Wyre Forest District Council**
- **Worcestershire County Council**
- **Herefordshire and Worcestershire Fire and Rescue Service**
- **The Probation Service**
- **Redditch, Bromsgrove and Wyre Forest – Integrated Care Board  
(replaced Clinical Commissioning Groups)**

## Serious Violence Definition

Following consultation and discussion, this definition has been agreed by all five Community Safety Partnerships (CSPs) to represent serious violence within the counties of Worcestershire, Herefordshire, Shropshire and Telford and Wrekin.

### **West Mercia's definition of Serious Violence:**

*Violence, both physical and sexual, causing lasting psychological or physical harm, or where lasting harm was intended. This includes offences where there is an inherent threat of physical harm, such as county lines or offences involving use of an offensive weapon, blade or pointed article or any corrosive substance.*

To include:

- Violence with injury resulting in serious harm, with a threshold of Section 20 GBH
- Homicide including attempt murder
- Serious sexual harm – rape and sexual assaults
- Robbery
- Violence, including threats and aggravated offences, involving use of an offensive weapon, blade or pointed article or any corrosive substance
- Violence, including threats and aggravated offences, involving use of a firearm
- Offences with a county lines marker
- Violence with injury marked as domestic abuse
- Violence with injury marked as hate crime
- Modern slavery offences

# Worcestershire Serious Youth Violence Project

Using Serious Violence Duty funding allocated to Worcestershire, NWCSP and SWCSP have commissioned the West Midlands youth mentoring and support organisation “The Right Path” to deliver intensive 1:1 mentoring that is specifically designed to support and guide young people who are at greater risk criminalisation, those not accessing education and those at risk of permanent exclusion.

The project operates on a referral basis and details of the service has been circulated widely to Community Safety partners, schools and youth organisations across Worcestershire.



[www.therightpath.org.uk](http://www.therightpath.org.uk)

# Worcestershire Serious Youth Violence Project

## THE RIGHT Outcomes

#THERIGHTPATH

The RightPath offers a variety of interventions that help young people achieve the following:

- **How** to Build & Sustain Healthy Relationships
- **Awareness** of Actions & Consequences
- **Improve** Self Esteem & Confidence
- **Enhance** Social & Emotional Wellbeing
- **Raise** Aspirations
- **Improve** Levels of Academic Engagement
- **Increase** Awareness & Understanding of Exploitation
- **Reduce** At Risk Behaviours
- **Develop** Emotional Intelligence & Literacy

# NWCSP Core Funding - 2024/25

Area of Benefit	PCC Grant
West Mercia CSP Analyst Team (Top Sliced)	£20,000
West Mercia Integrated Offender Mgt. (Top Sliced)	£ 1,000
West Mercia Hate Crime Project (Top Sliced)	£10,838
Bromsgrove Youth Outreach	£13,000
Bromsgrove Tasking Projects	£11,472
Redditch Youth Outreach	£17,000
Redditch Tasking Projects	£12,470
Wyre Forest Detached Youth Team	£15,000
Wyre Forest Tasking Projects	£16,470
NW Domestic Homicide Reviews, DA Projects including the 'Cut it Out' Initiative	£22,000
<b>Total</b>	<b>£139,250</b>

# PCC Safer Communities Fund 2024/25

## Additional Funding for Bromsgrove

Project	Amount
<p><b>Bromsgrove &amp; Redditch Domestic Abuse Recovery &amp; Support Project:</b></p> <p>Will commission a Research professional to undertake a local mapping exercise and gap analysis in Bromsgrove and Redditch; identifying what local Domestic Abuse services are available, how accessible they are particularly for diverse and minority communities and any geographical areas where additional support is required. In return for this engagement, small pots of funding will be made available for local grassroots organisations that run Domestic Abuse support activities and interventions for victims and survivors at a neighbourhood level.</p>	£33,334
<p><b>Bromsgrove &amp; Redditch Small Area Improvement Project:</b></p> <p>Funding will be provided for local areas defined at LSOA level that require, environmental and structural changes to reduce crime risks. Each area identified will be assessed using Designing out Crime principles and then a variety of target hardening, and crime prevention interventions will be implemented in each local area. Initial scanning of crime and ASB data will identify the LSOAs that will be prioritised for interventions with approximately £10,000 per area allocated to deliver a series of meaningful neighbourhood improvements.</p>	£33,333

# Safer Bromsgrove – CSP Funding 2023/24

Funded Projects	Amount
<p><b>Bromsgrove Youth Outreach</b> The CSP grant allocation for Youthwork was opened to applications through the Children and Young People Providers group for projects to support crime prevention/reduction activities, improving the personal safety of young people and reducing the risk of exploitation. The successful applicants were:-</p> <p>Woodrush Youth &amp; Community Centre - £4,000 The Hub: Valuing Young People - £5,000 Catshill Games Hub - £3,702</p>	<b>£13,000</b>
<p><b>Safer Bromsgrove Tasking Fund</b> The CSP grant allocation for Safer Bromsgrove was opened to applications from partners for specific projects that address the Partnership’s priorities. The successful application was:-</p> <p>R.U.N project and Inspiring Futures programme for survivors of Domestic Abuse - £5,167</p> <p>There was also a contribution to 2 x Knife Arch / Poles for use at operations and interventions to tackle serious violence, knife crime and county line. This will now provide a mobile Knife Detection facility in each area within the NWCSP areas - £6,750</p>	<b>£11,472</b>



# **Community Safety Project Updates**

**March 2024 to December 2024**

# Redeployable Camera Scheme

Since figures were last provided in March 2024, there have been 5 new applications for the use of redeployable cameras in Bromsgrove, Redditch and Wyre Forest which are currently pending further information or actions to support installation. There are 15 current deployments of cameras across the three district areas.

The CCTV Team always look to find ways to approve an application when it is received and reasons why installations do not progress include:

- No suitable mounting/power source/point available
- Significant privacy concerns
- RIPA required
- The requirement for camera is no longer an issue since the application was submitted.

Applications that are successful are installed to combat ASB, drug taking, vehicle crime and vandalism.

Before each camera is installed a consultation document is posted to all surrounding properties covered by the proposed camera view. Consultation responses were invited through a press release and social media however the response to these consultations is typically minimal.

# Redeployable CCTV

## Current Deployments in Bromsgrove

No.	Location	Installation Date	Proposed Removal Date
903	Sidemoor - King George Play Area	14/05/2024	02/09/2024
910	Rubery - Brook Road Park. Rear of Rea Avenue	24/05/2024	02/09/2024
901	Catshill - Stourbridge Road to Milton Road Footpath (Stourbridge Rd end)	05/07/2024	27/09/2024
907	Catshill - Milton Road play area ('Birdcage')	05/07/2024	27/09/2024



**The Respect Programme** provides community safety awareness sessions as part of school PHSE drop down days and bespoke classroom sessions on several subjects such as recognising and reporting hate crime, understanding healthy relationships/domestic abuse, the dangers of substance misuse and promoting respect and community responsibility.

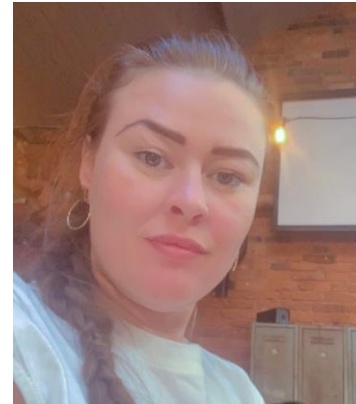
The programme also provides a therapeutic mentoring scheme which provides weekly support and guidance sessions to young people at risk of becoming victims or perpetrators of crime.

2024 sees the cohort that the Respect Programme works with expand further. The team receive between 40 to 60 referrals each half term, with our youth mentors holding around 200 open cases at any time.

The referrals into the programme continue to increase in complexity with support being provided to young people who are at a high level of need and are at significant risk of becoming involved in criminality, both as potential victims or potential perpetrators.



Following a year-on-year increase in referrals to the Respect Programme, we have been very fortunate to be able to expand our current team of experienced, qualified youth mentors. We currently have 10 mentors who support the delivery of the Respect Mentoring Programme





# School Drop Down Days

During the reporting period, drop-down days were held in two local schools. During these days community safety and crime prevention workshops were delivered by the youth mentors and officers from community safety partner agencies.

South Bromsgrove High School – Community safety sessions were delivered to pupils around Hate Crime Awareness, Drugs and Alcohol, Healthy Relationships and Anti-Social Behaviour

Parkside Middle School – Workshop sessions were delivered on Hate Crime Awareness, Drugs and Alcohol, Healthy Relationships and Anti-Social Behaviour

# Youth Outreach

The Youth Hub and Reach Out Bromsgrove work with the Community Safety Youth Workers to deliver outreach and detached youth work sessions across the district.

The youth teams patrol two to three times a week depending on the weather, and this successful engagement work with young people out in the community and has directly resulted in the reduction of reported incidents of Youth ASB in location across the district.

At the height of the summer, outreach youth workers can engage with between 600 – 800 hundred young people per month.

The outreach teams are now seen as a model of best practice across the county and over the past year the team have expanded their delivery and have been commissioned to work in Droitwich.



# The Bromsgrove Youth Listening Service

 **THE PARISH OF**  
**BROMSGROVE**  
ALL SAINTS~ST.ANDREW~CHRIST CHURCH~ST.GODWALD~ST.JOHN



The Community Safety Team has worked with the Anglican Churches to establish a volunteer Listening Service for young people requiring lower-level support and intervention. The Listening Service is now in its eighth year. The service is well established in Bromsgrove High schools where you people with lower-level concerns and worries are supported by volunteers.

Following the extension of the programme into the middle schools, there has been an increase in new Listeners with a number of new volunteers being recruited. Currently sessions are now being held in St Johns Middle School, Aston Fields Middle School and Parkside Middle School



# Bromsgrove Youth Hub CiC

The Bromsgrove Youth Hub an independent Community Interest Company (CIC) which provides support and activities for young people, offering a space for young people to socialise safely. The original concept was established as a partnership project led by the Community Safety Team, the YMCA and Bromsgrove Churches Together.

The Hub offers a tailored programme of sessions such as mental health support, open access youth club and free music and art therapy classes. It also provides signposting and ad-hoc support as part of its drop-in and outreach work.

Safer Bromsgrove works closely with The Hub to support local young people, and the Hub supports the partnership by responding to reports of youth ASB and providing advice, guidance and signposting to statutory processes in place to support young people facing additional challenges.





# Alternative School Provision

---

The Community Safety Team worked with Young Solutions - Worcestershire to secure county-wide Big Lottery funding. A successful bid secured a Reaching Communities grant for Worcestershire, which provided £23k of funding for Bromsgrove Youth Hub.

The programme called Youth Scape originally focused on outreach work, mentoring and diversionary activities but once a post became vacant in the first year of the project it provided an opportunity for the funding to be re-purposed and used to establish and open an Alternative School Provision. This was launched in October 2023 and since its launch has supported 20 young people to stay in education and gain vocational City and Guilds qualifications. This project continues to be seen as an example of best practice in the County.

# Volunteer It Yourself

The Community Safety Team have been supporting the VIY team to identify community locations that would benefit from refurbishment. Once sites have been agreed the Community Safety Team have supported activity by identifying learners aged 16 – 30 to sign up project to carry out work such as painting and woodwork. Those people attending are the furthest away from the job market and are often on the edge of criminality. On completing the project, those engaged gain City and Guilds qualifications for the work carried out. In Bromsgrove, the VIY team and its learners have worked on transforming the Bromsgrove Rugby Club, Wythall Hall, Shawfield in Wythall, Rainbow Garden in Charford and a Community Centre in Hagley.



In May 2024, the Annual Redditch and Bromsgrove Young Citizen's Challenge (YCC) was held at the Bromsgrove Police and Fire Station from 20th – 24th May

YCC offers all Year 6 students from Redditch and Bromsgrove the opportunity to take part in a series of scenarios and take quizzes on what to do in various situations, when exposed to different risks. Each partner-led session promotes experiential learning as each scenario is interactive and designed around student participation.

Key partners such as the Community Safety Team, Police, Fire & Rescue Service, Safer Roads Team, SARA (Water Safety) and Western Power were in attendance to get across key safety messages across to Year 6 students. Across the week Community Safety Partners engaged with 843 young people.

# YOUNG CITIZEN'S CHALLENGE



# Designing Out Crime



The Community Safety team carry out Environmental Visual Audits and Crime Risk Surveys at locations across the district which are experiencing crime and ASB issues. Site visits during 2024 include:-

- Shelley Close, Catshill
- Bromsgrove Town Centre
- St Chads Park, Rubery
- Bromsgrove Allotment sites
- Lickey Hills

## Sanctuary Assessments

Sanctuary is the concept whereby survivors of domestic abuse are supported to remain in their home rather than fleeing. This is achieved by a professional assessment of the security improvements necessary to make the home environment safe.

Community Safety DOC officers are available to conduct Sanctuary assessments which could enable survivors of domestic abuse and their children to remain in their homes, close to family, friends and work. This undoubtedly improves their safety, reducing fear of reprisals and minimising the disruption to their lives.

# Planning Consultations



Until recently, the Community Safety team had two College of Policing qualified, Designing Out Crime Officers (DOCO) who can review planning applications, making appropriate crime prevention and security recommendations with the aim of making future building developments less vulnerable to crime and disorder

During the reporting period, the Community Safety team scrutinised 23 planning applications. 16 of these were in Bromsgrove comprising totals of 1350 residential units and 1286 Sq.M of commercial space.



# The RUN Project - Bromsgrove

The Run Project is funded through Safer Bromsgrove and the Programme is coordinated by a community volunteer who is herself a survivor of domestic abuse.



The coordinator has linked up with the Inspiring Leadership foundation and the RUN programme hosts weekly sessions where survivors get together, share and build on life skills and are supported to reach the goals they want to achieve in their lives.

# Community Safety Engagement Events 2024

Attending events and engaging with local communities provides valuable opportunities for officers to meet with residents, pass on crime prevention information and advice and find out about community concerns and fears.

In 2024 officers attended events including:

- HoW College Freshers' Fair
- Bromsgrove Green Fair
- Police and Fire Station Open Day
- Police SNT Events
- BDHT Fun Days
- Wellbeing Fayre at Charford
- Wellbeing Fayre at Woodrush High School





# Vulnerable and Older Person Project



The Community Safety Team manage the Nominated Neighbour scheme, which aims to protect vulnerable residents from doorstep crime and rogue trader offences. This continues to be a successful local initiative, which we continue to roll it out further to our residents.

To support this work Safer Bromsgrove has established a working group to develop a referral pathway for our most vulnerable and older residents to ensure they are able to access all the required support they need in one place. As part of this project, we are going to look to establish Nominated Neighbour areas across the district, with the aim of giving a clear message to those that might want to prey on our residents, that these areas are protected and are no-go locations for that type of behaviour. Work on two pilot areas in Bromsgrove District will start in the new year.

This developing project will bring together partners and volunteers to improve the offer to older and vulnerable residents including resources, information and targeted support to protect them from crime

# NWCSP Funded Knife Arch



Date	Purpose
05/03/2024	Supported West Mercia Police Op Forefront - day of action showcasing the work the police carry out every day of the year to protect, serve and keep communities safe from criminals.
10/05/2024	Supported national Op Sceptre (Police Knife Crime Education and Zero Tolerance Operation)
13/05/2024	Used for further Op Sceptre activities

On the 5th March, the Community Safety Team supported Police Officers as part of Operation Enzyme which focused on raising public awareness of burglary and car theft



# NWCSP Personal Safety Events

14<sup>th</sup> September in Bromsgrove  
28<sup>th</sup> September in Rubery

The Community Safety Team worked with key partners to host two a personal safety events in Bromsgrove Town Centre and Rubery High Street.

The team were joined by Spikes Bikes who gave out cycle safety advice and provided bike security marking.

The CSP also commissioned a Street Theatre company to engage with members of the public in a fun and informal way about personal safety and securing their property, issuing Crime Risk 'Red Cards' to people who were spotted with insecure or exposed property.



## Crime Risk Red Card

**Leaving valuables on show is  
an open invitation for thieves  
to steal them, they may  
distract you to do this!**

# 'CUT IT OUT' – Domestic Abuse Awareness Training for Businesses

**This year NWCSP has funded a new awareness initiative which aims to help professionals spot the signs of domestic abuse with their clients.**

**The Cut It Out initiative** raises awareness of the devastating impact of domestic abuse by offering free training for all professionals who have unique, one on one trusting relationships with their clients. Originally the project was aimed at hair and beauty professionals but has now been widened **to any professional working in any sector** such as physiotherapists, chiropractors, tattooists, cleaners, etc.

The **Cut It Out** campaign was first launched in Norfolk following the murder of Kerri McAuley, who was killed in 2017 by her abusive partner. Before her death, Kerri had disclosed to her hairdresser that she was the victim of abuse and reached out for support, but the seriousness of this wasn't realised.

Everyone who takes part in the training will receive materials to display in their business windows or mirrors to show that it is a safe space. They will also receive a pin badge which is a great way to start a conversation, it gives the opportunity to talk about the training they have completed and then offer support services if a client needs it.

Cut It Out will be launched soon by the North Worcestershire Community Safety Partnership with the first session being held in Bromsgrove. The training is delivered by Martin Lakeman (Domestic Abuse Consultant). Martin says:

*Our aim is that as many professionals as possible have the opportunity to come to a free session and learn about what domestic abuse is and what they can do to recognise the signs, and signpost those that may be suffering abuse to support. Because of the proximity certain professionals have, they will see things in their customers other people might not notice. People are more likely to talk to someone they trust about abuse rather than report it to the police. A salon for example may be the ideal place for a victim to seek help as it could be one of the few places their abuser will allow them to go without them."*

# Annual White Ribbon Domestic Abuse Campaign 25<sup>th</sup> Nov to 10<sup>th</sup> Dec

This annual campaign features various community events and social media promotion, with the 16 Days of Action keenly supported by our partners and the local press.

This year Community Safety team, the Police, Domestic Abuse professionals and volunteers hosted an awareness raising stand in ASDA Supermarket to support the campaign and promote the work of support services.

Alongside this in-person promotional activity which took place on the 27<sup>th</sup> November, the team also had a strong social media campaign, engaging with local organisations and businesses throughout the full 16 Days of Action.



# Safe Places Scheme

The Safe Places Scheme gives the elderly, people with a disability, illness or learning difficulty, or anyone who feels in danger; a range of safe places where they can go to for help if they feel they are being bullied, abused or harassed while out and about.

All Safe Places are identified by a Safe Place sticker and the organisations employees receive training, so that they can give reassurance and help people contact appropriate support, as needed.

A full directory of the Safe Places in Bromsgrove is available here:- [Safe Places | Our Way Self Advocacy](#)



# Bromsgrove District Youth Service Fund

Separate to crime prevention and community safety work, the Community Safety Team co-ordinates the commissioning of District youth services funding on behalf of Worcestershire County Council. This five-year fund provided by WCC supports local youth groups to provide open access, targeted and 1:1 youth activities that provide quality youth provision, improve young people's social and emotional learning and behaviours, improve mental health and improve young people's engagement with the local community.

Local youth groups commissioned to deliver a wide range of youth provision in Bromsgrove District are:

The Bromsgrove Youth and Community Hub - £27,282 to provide Open Access / Detached / Targeted Sessions.

Waseley Hills Youth Hub - £10,000 to provide Open Access Sessions

YMCA - £3,069 to provide Open Access / Targeted / 121 Sessions

Woodrush Youth & Community Centre - £10,000 to provide Open Access Sessions

The WCC funding is also providing opportunities for local youth workers to achieve additional qualifications in Youth & Community work at Level 2 and above.